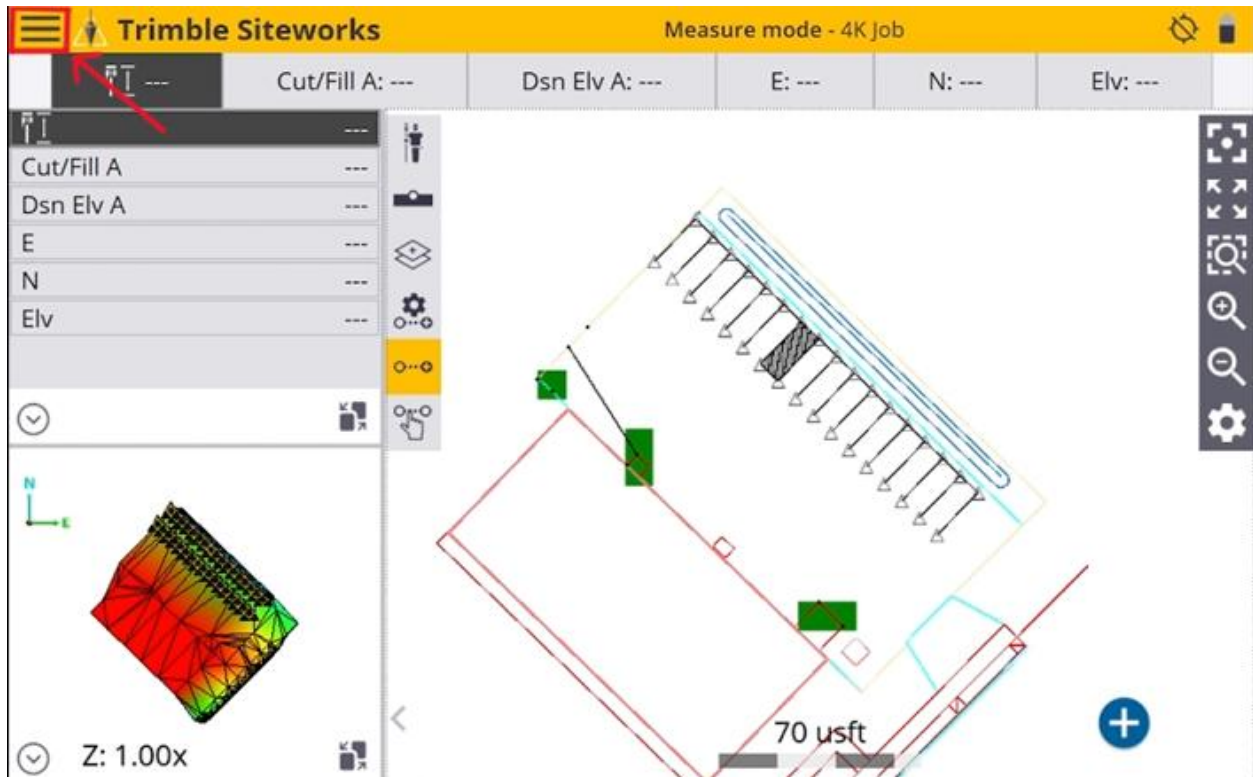


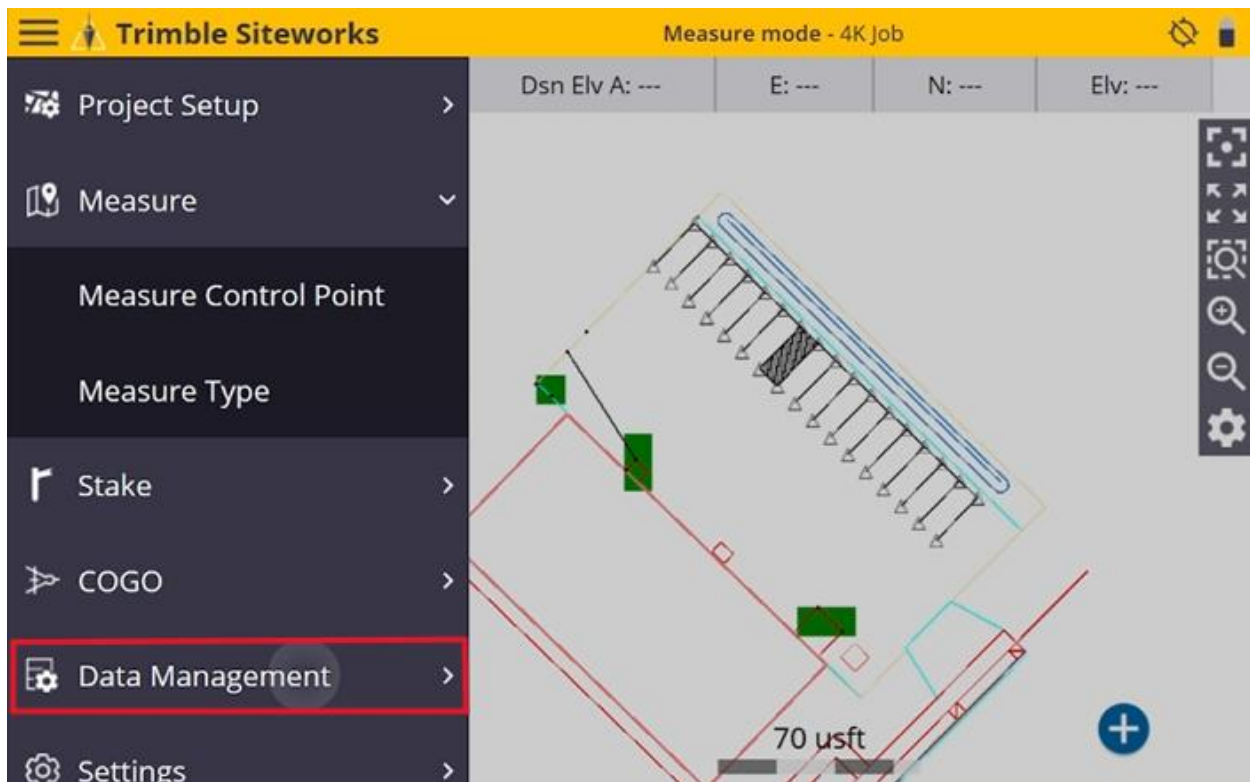


How to Export Earthworks Files on Trimble Siteworks

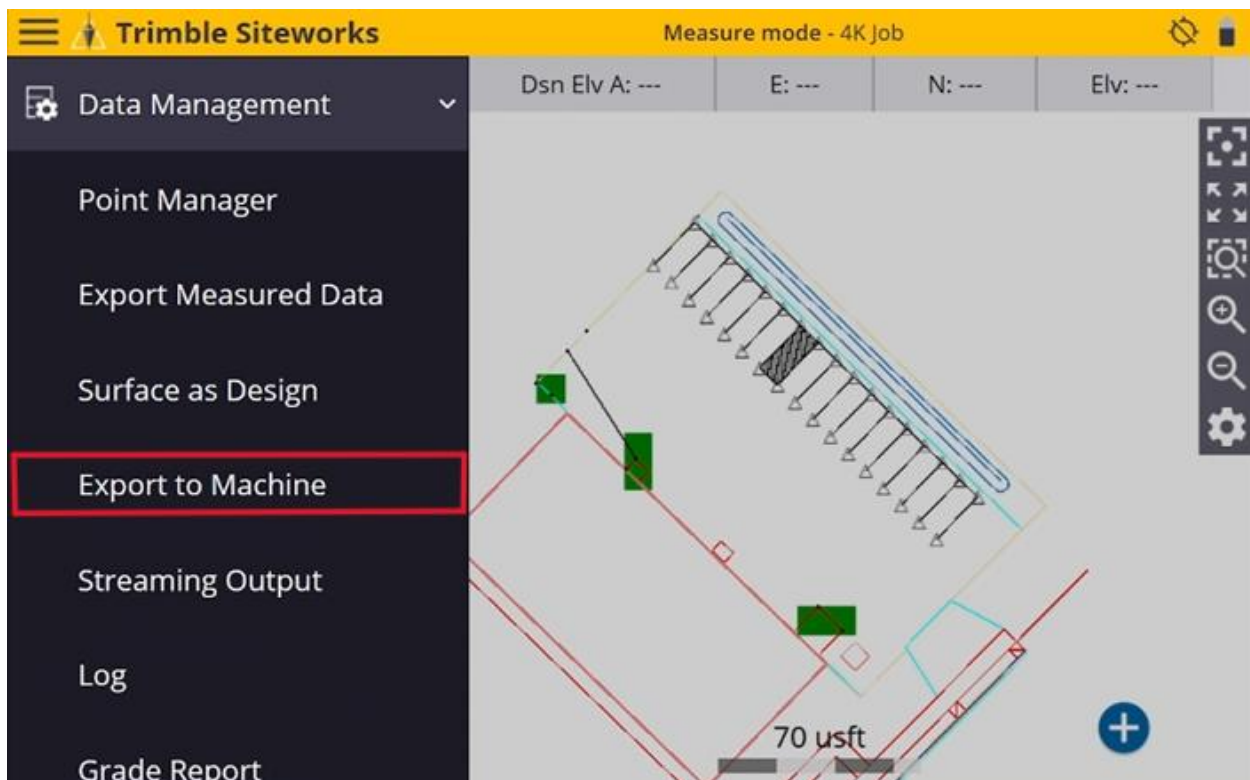
1. Tap the menu in the top left.



2. Select **Data Management**.




3. Tap on **Export to Machine**.



4. Tap on **Surface**.

Export Data for Machine

Export data type  Surface

Machine control device CB430/CD700

Design name

Linework Include Measured Linework

File format SVD/SVL


ACCEPT

5. Select **Design**.

Export Data for Machine

Export data type Surface

Machine control device

Design name  Design

Linework

File format SVD/SVL

ACCEPT

6. Select **Earthworks**.

Export Data for Machine

Export data type: Design

Machine control device: CB430/CD700

Select project: CB430/CD700, CB450/CB460

Select design: **Earthworks**

ACCEPT

7. Tap on **ACCEPT**.

Export Data for Machine

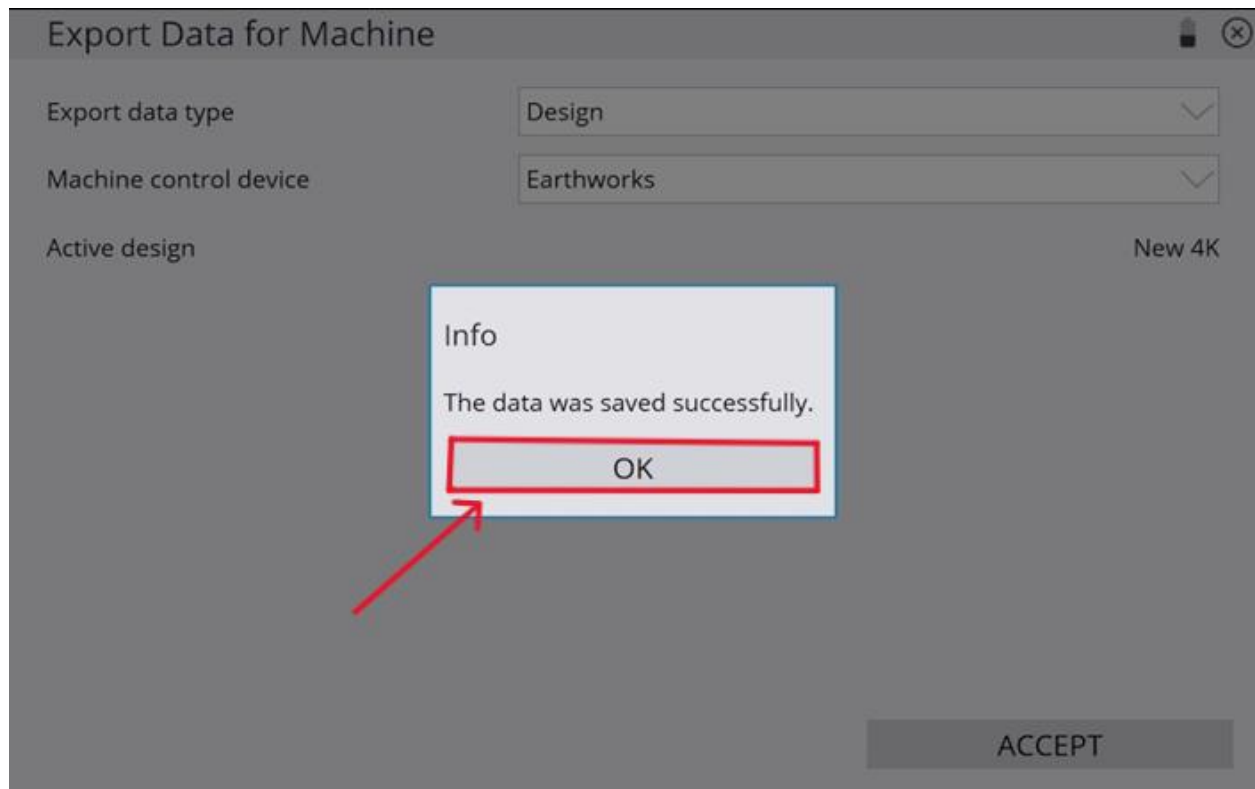
Export data type: Design

Machine control device: Earthworks

Active design: New 4K

ACCEPT

8. Tap on **OK**.



5900 NE 152nd Ave. Suite 120 Vancouver, WA 98682

Phone: (564) 274-0024 | Fax: (360) 635-4924 - Email: Support@4kequipment.com