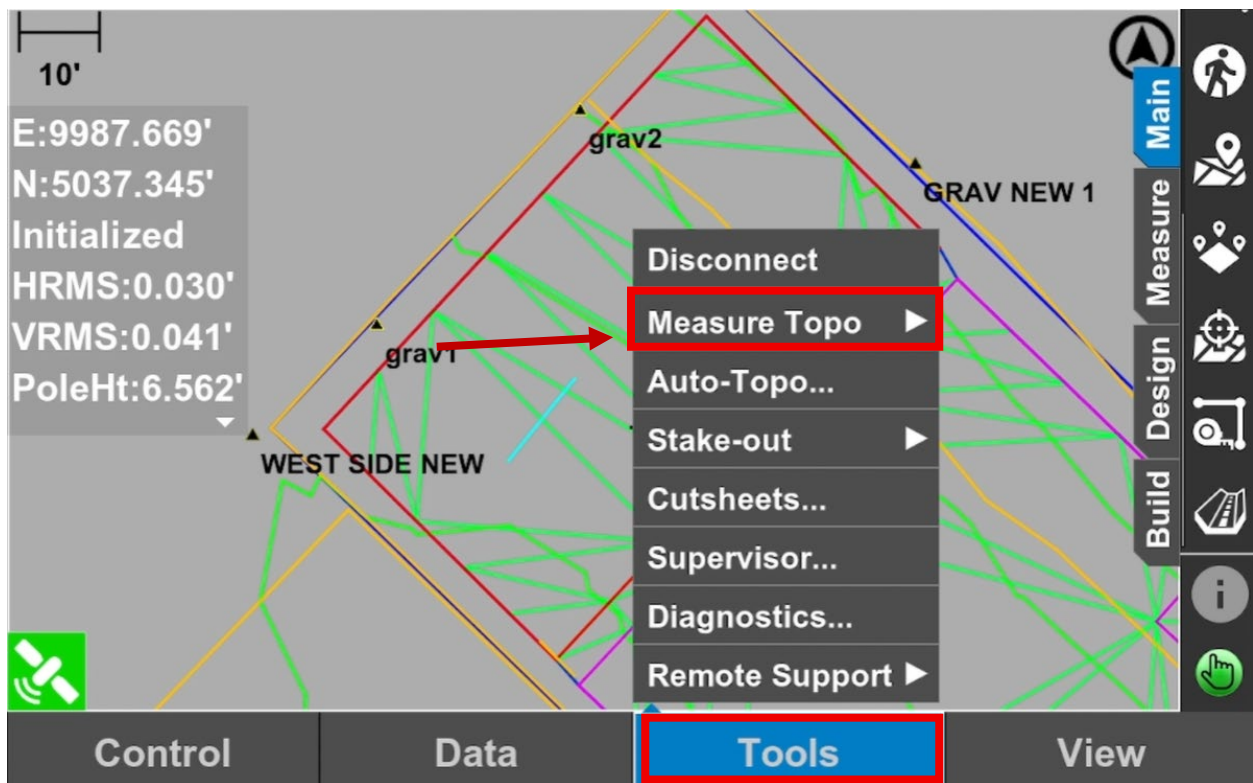


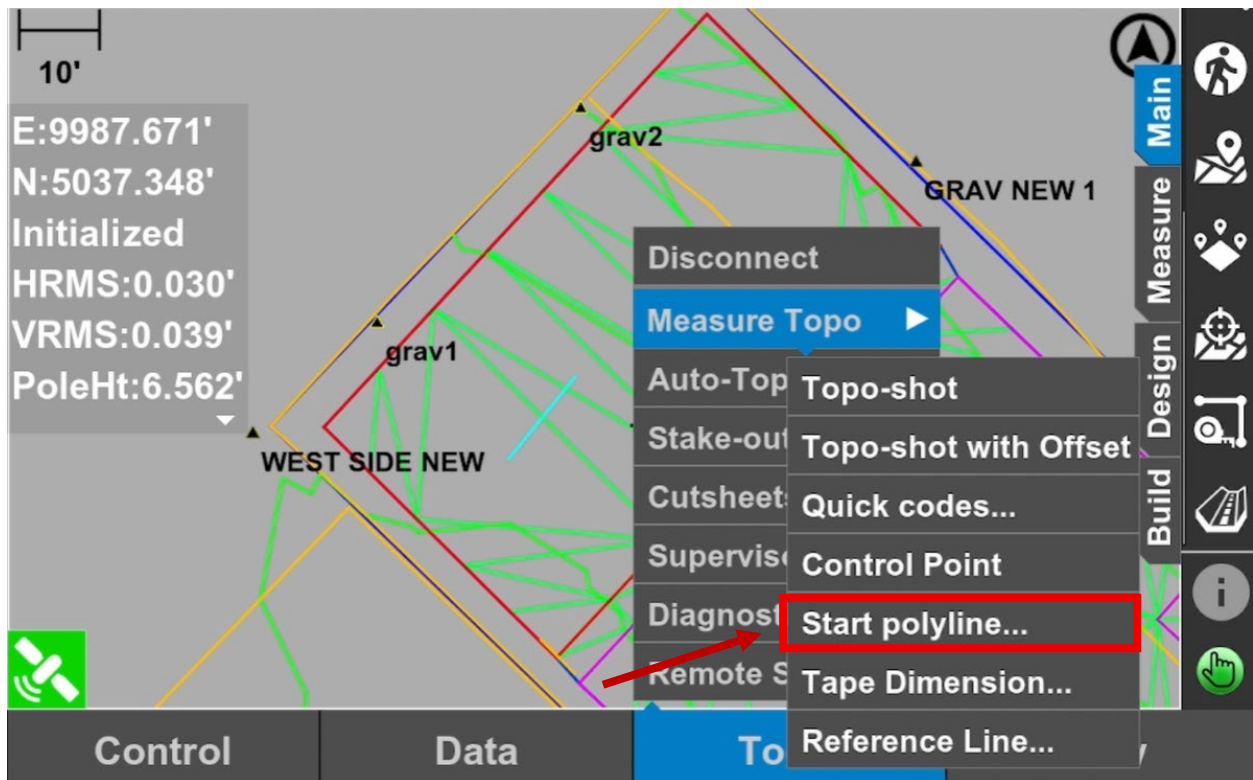


## How to Measure in a Line on Topcon V15 Pocket 3D

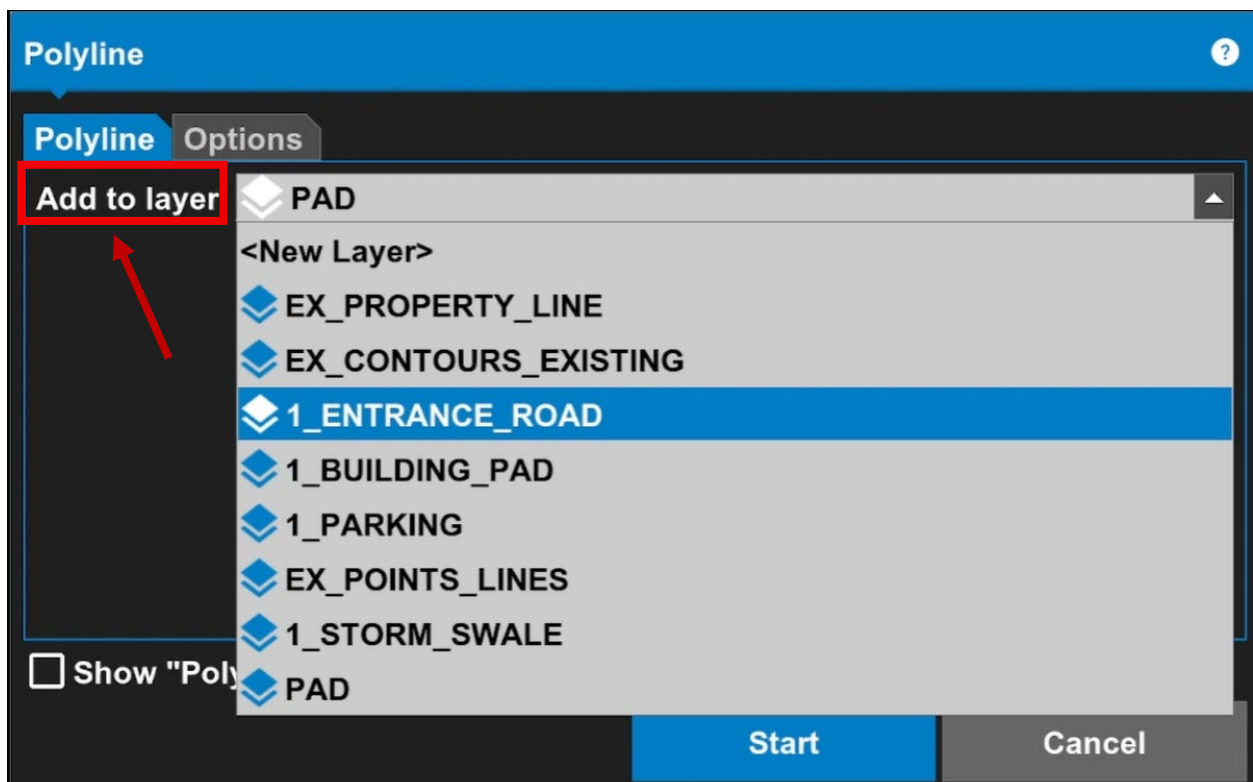
1. Tap “Tools” in the bottom menu then click “Measure Topo”.



2. Tap on **"Start polyline"**.



3. Then click **"Add to layer"** (You can add it to a new layer or just choose an existing one.)



4. Go to “Options” then select measurement count depending on how accurate you want to get

The screenshot shows the 'Polyline' dialog box with the 'Options' tab selected. The 'Sample Count' is set to 2, 'H. Precision' is 0.100', and 'V. Precision' is 0.200'. The 'Require RTK Initialized' checkbox is checked. Under 'Shortcuts', 'Show "Measure Curve"' and 'Show "Cancel Last Point"' are checked. The 'Show "Polyline" Shortcut Button' checkbox is unchecked. The 'Start' button is highlighted with a red box, and a red arrow points to the 'Options' tab.

Polyline

Polyline Options

Minimum requirements

Sample Count:	H. Precision:	V. Precision:
2	0.100'	0.200'

☒ Require RTK Initialized

Shortcuts

☒ Show "Measure Curve"

☒ Show "Cancel Last Point"

☐ Show "Polyline" Shortcut Button

Start Cancel

5. Go back to “Polyline” then tap on “Start”.

The screenshot shows the 'Polyline' dialog box with the 'Polyline' tab selected. The 'Add to layer:' dropdown is set to 'PAD'. The 'Start' button is highlighted with a red box, and a red arrow points to it.

Polyline

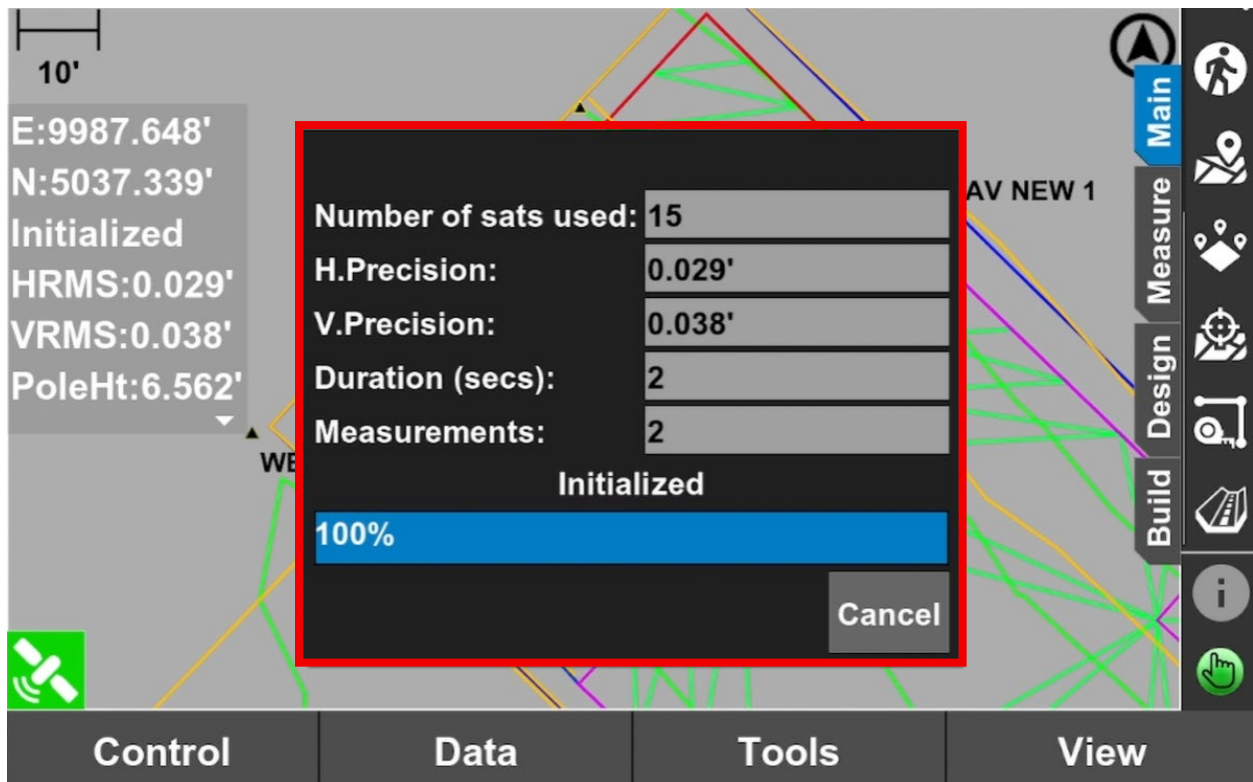
Polyline Options

Add to layer: PAD

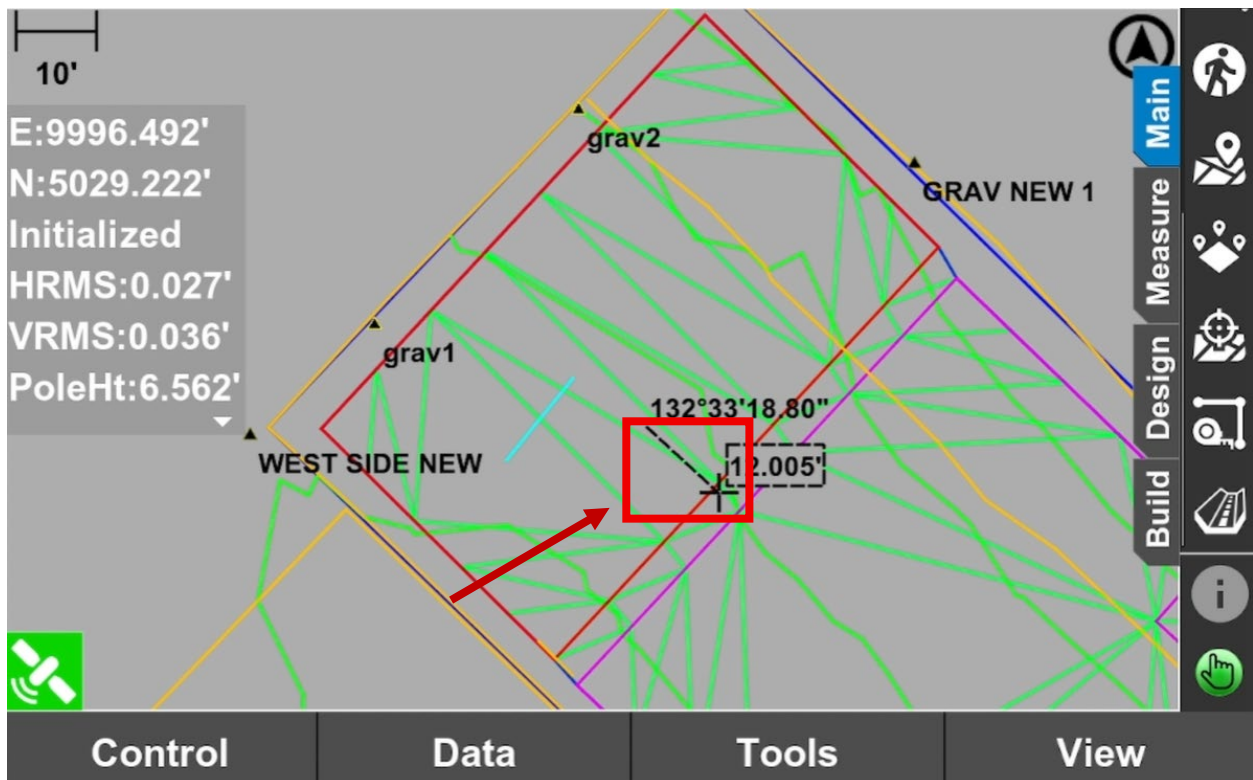
☐ Show "Polyline" Shortcut Button

Start Cancel

6. Wait for it to finish measuring.

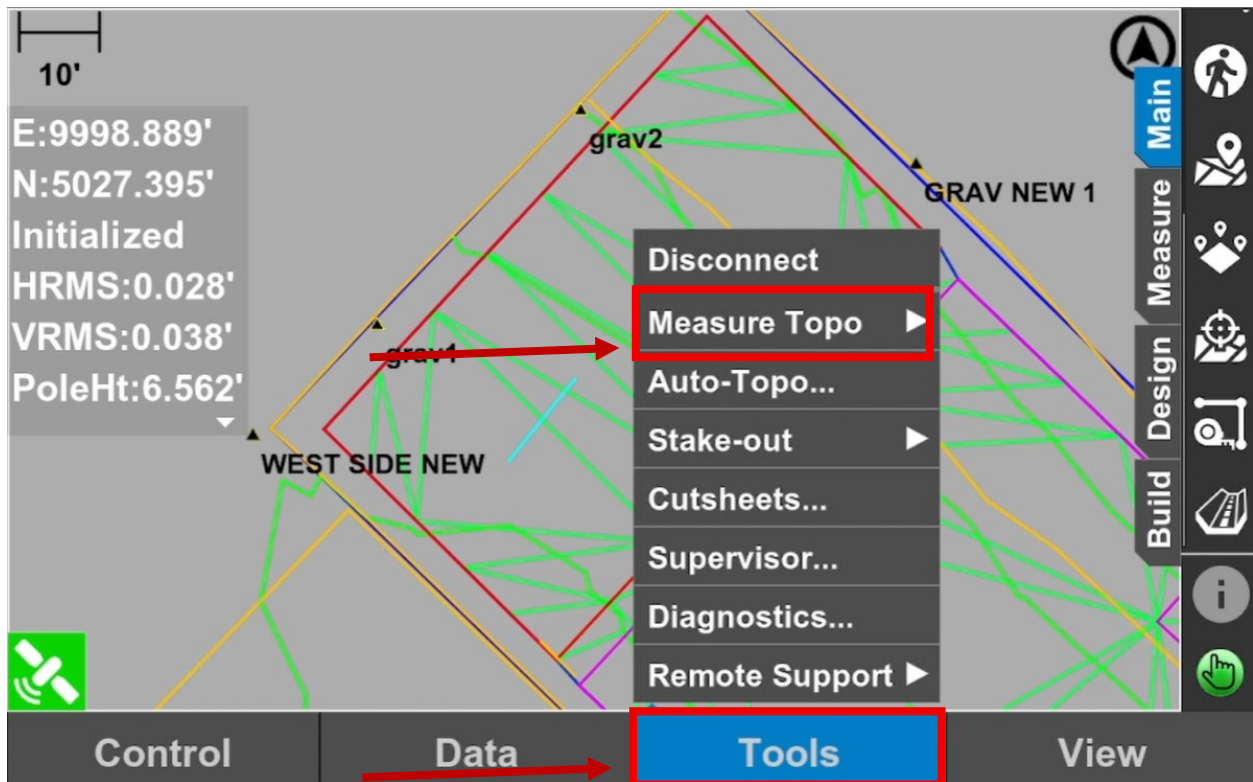


7. You'll see "Black dashes" when you walk and that's where your "Polylines" are going.

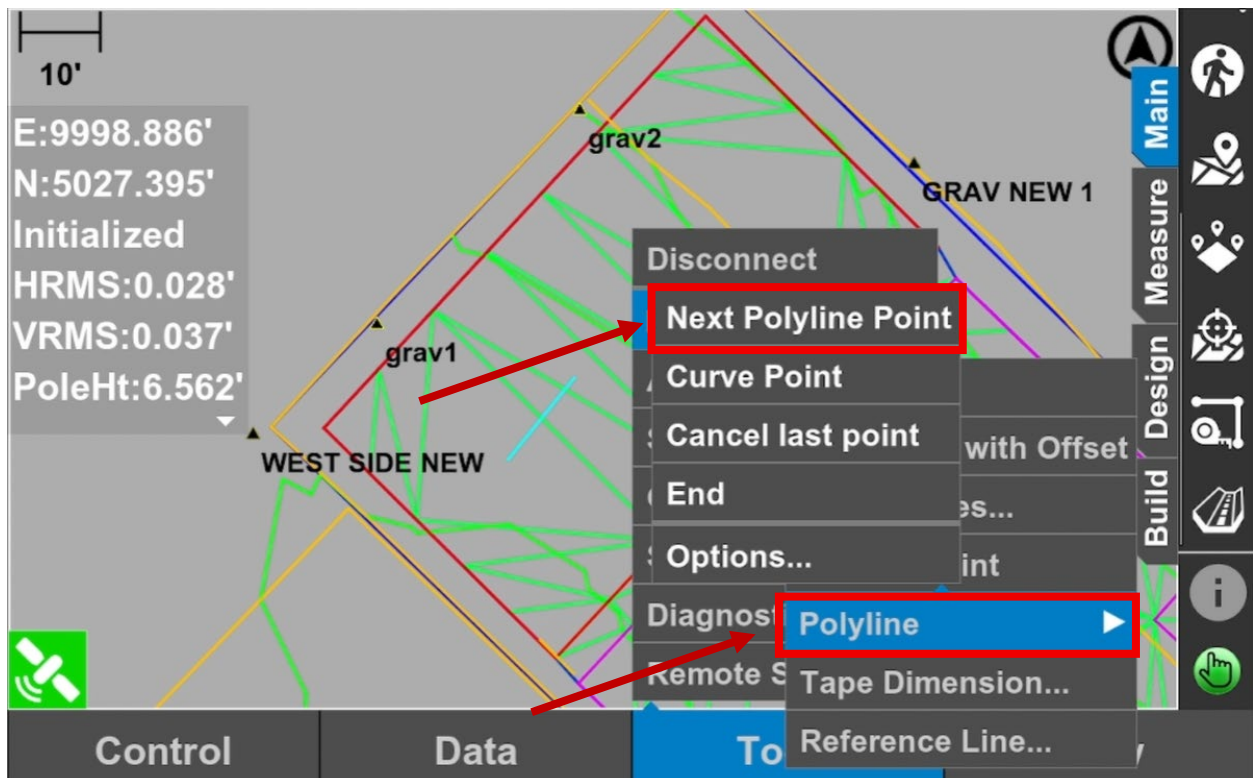




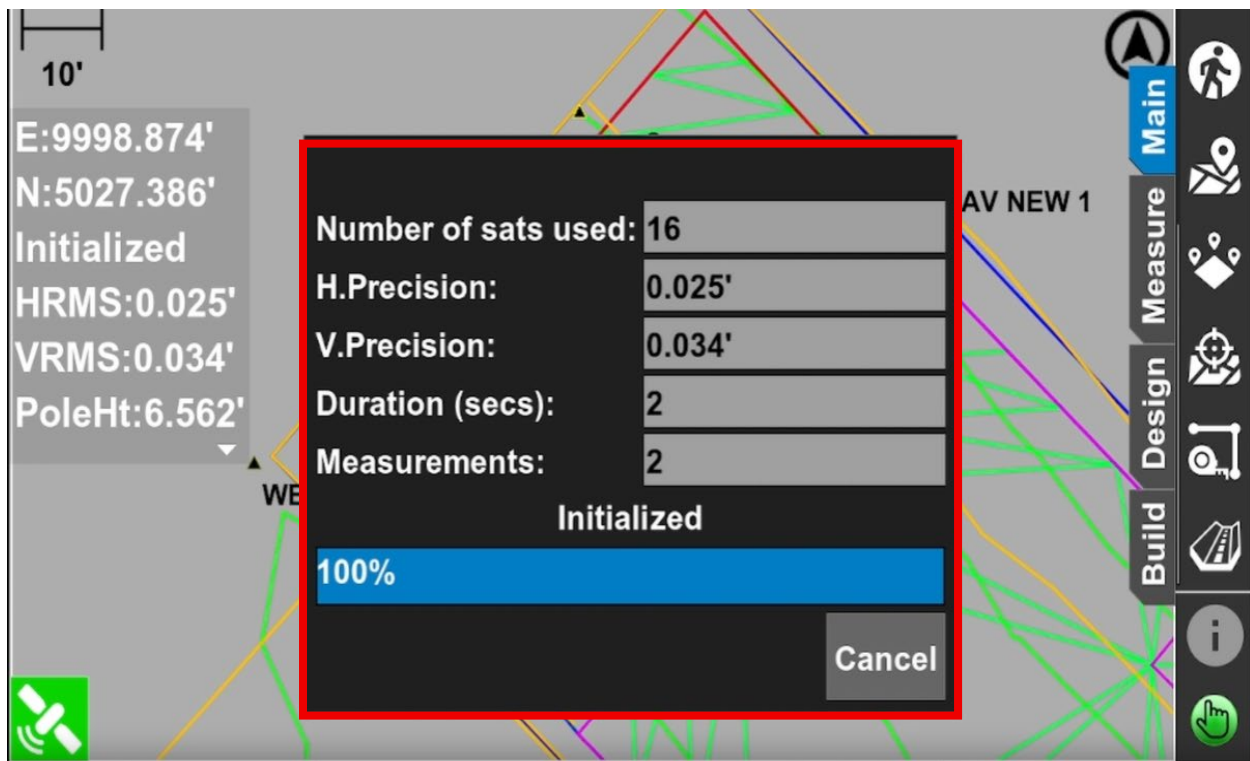
8. Put your "Rod" down, then tap again on **"Tools"** and **"Measure Topo"**.



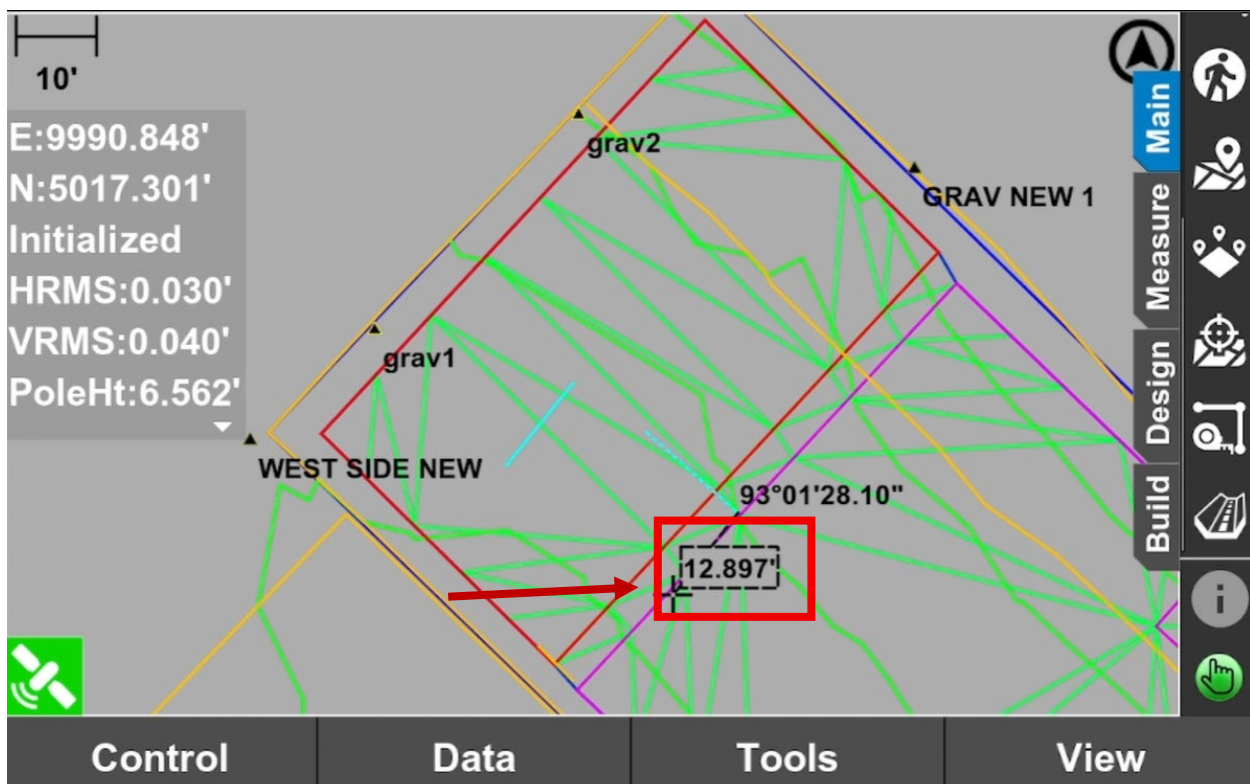
9. Click **"Polyline"** then click **"Next Polyline Point"**.



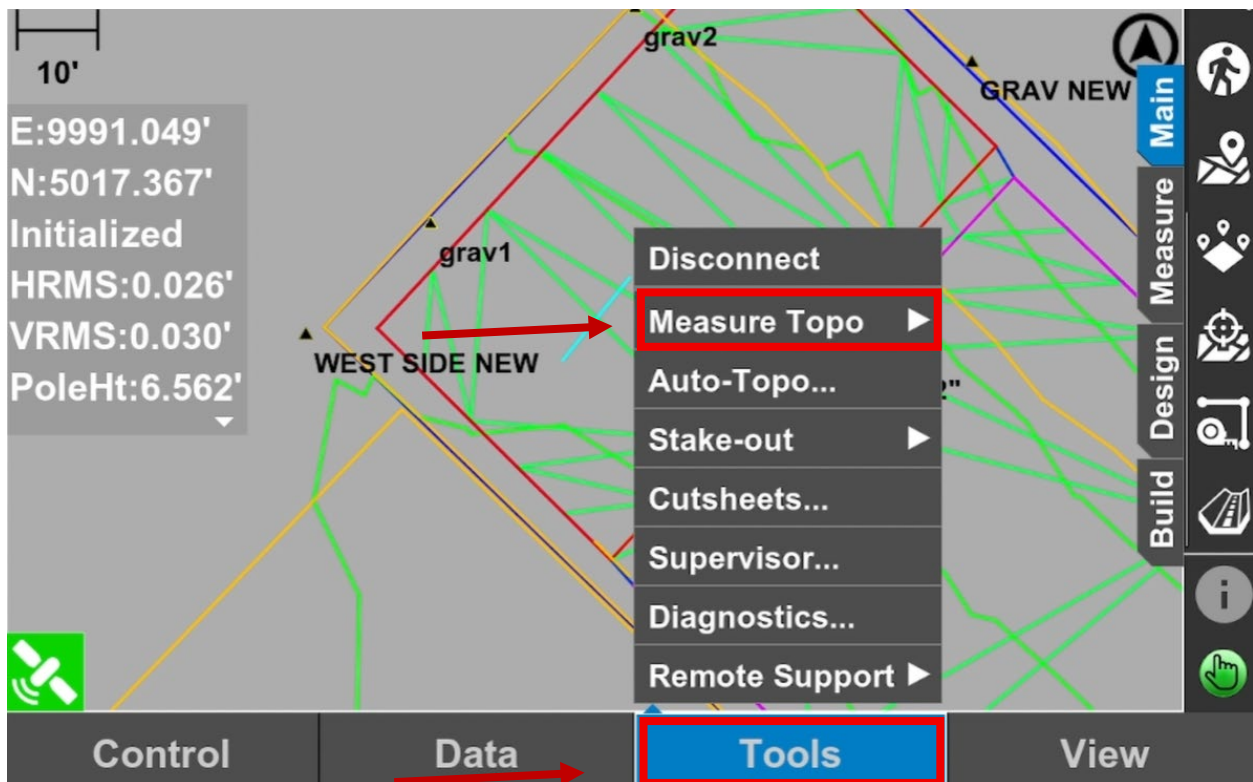
10. Wait for it to finish measuring.



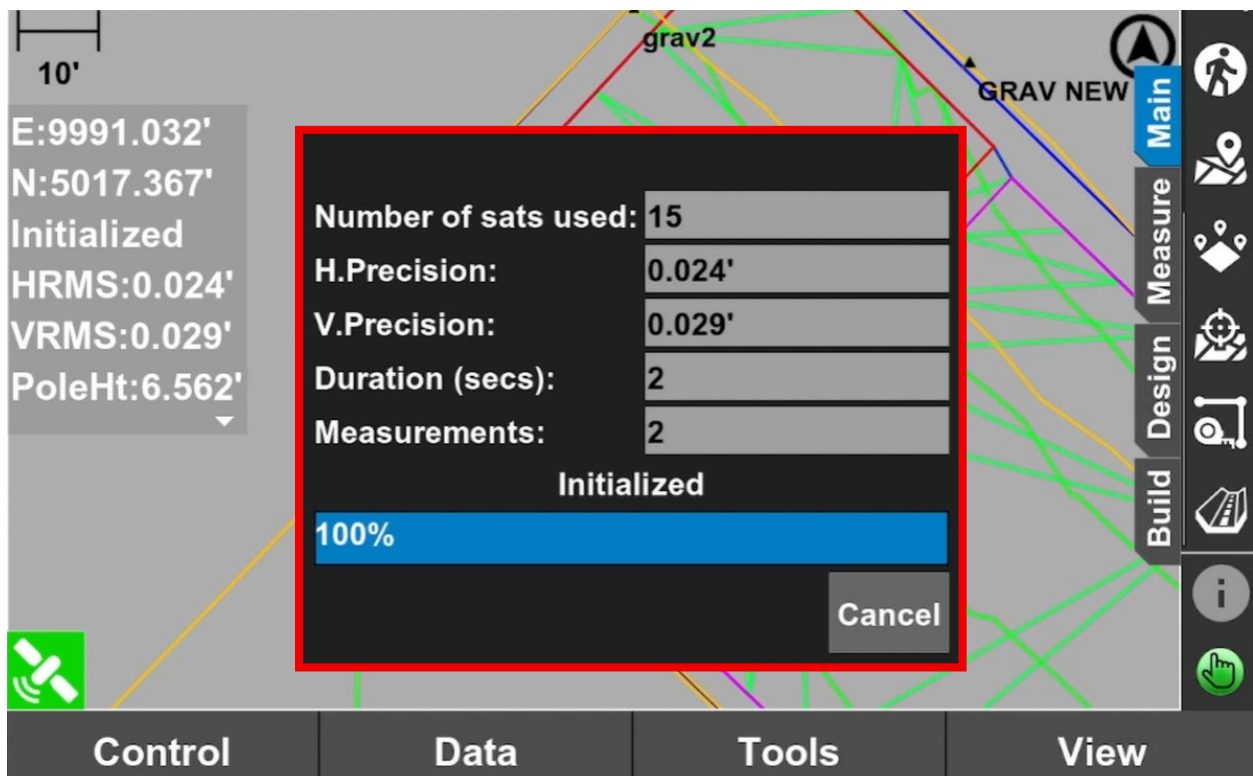
11. Walk towards the next desired "Polyline Point" and you'll see "Black dashes".



12. Then tap again on “Tools” and “Measure Topo”.

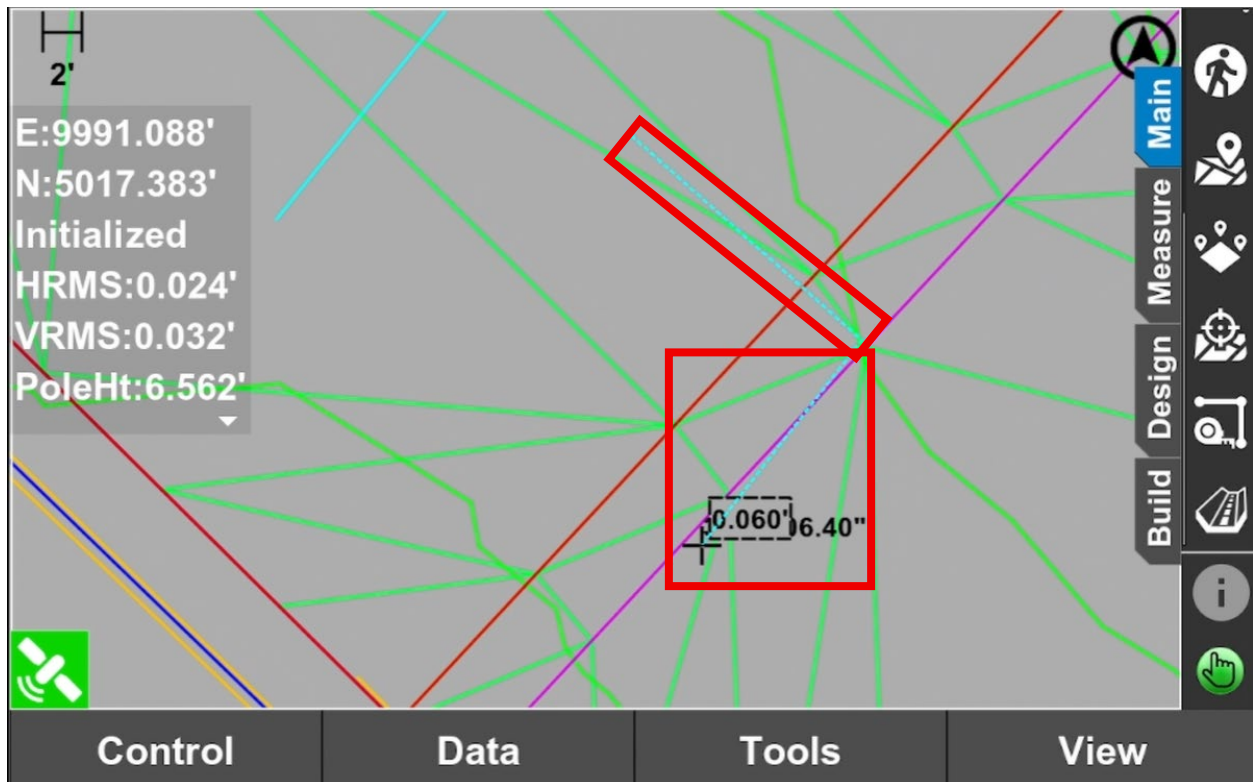


13. Wait for it to finish measuring.

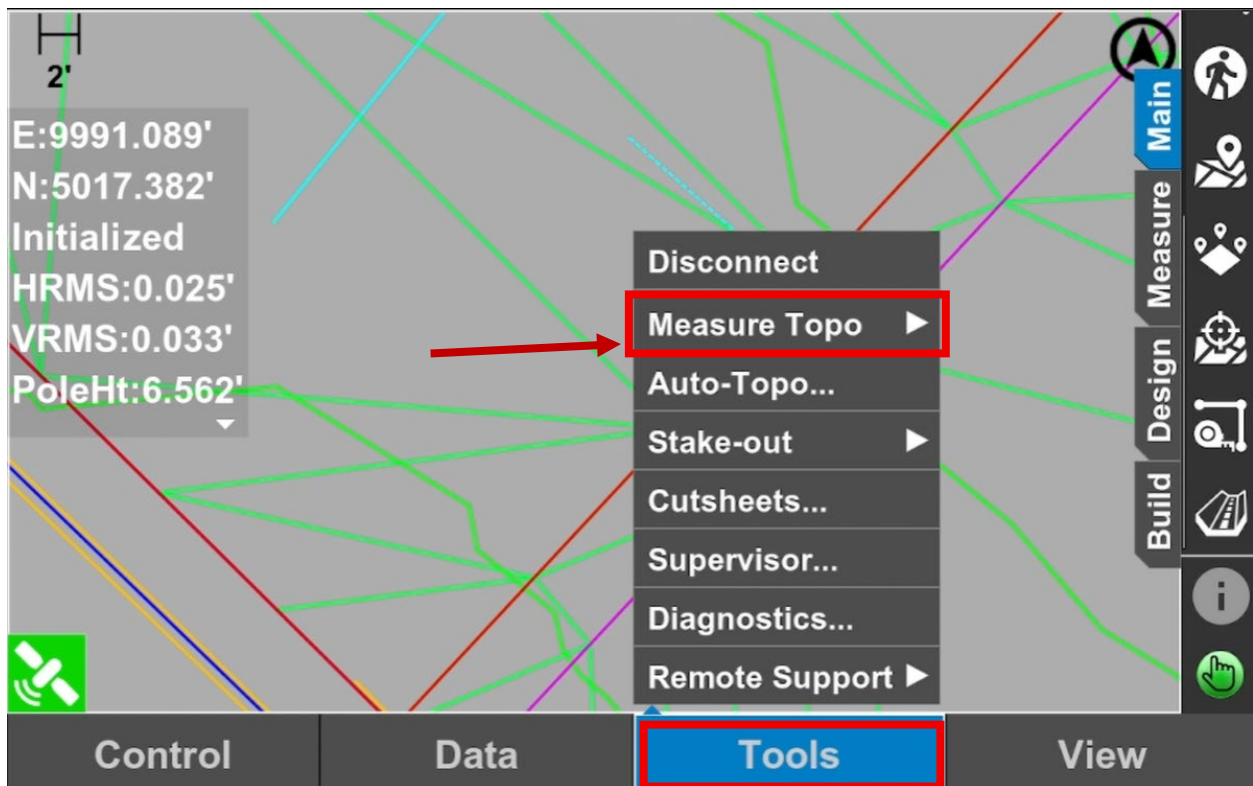




14. You can now see the lines made.

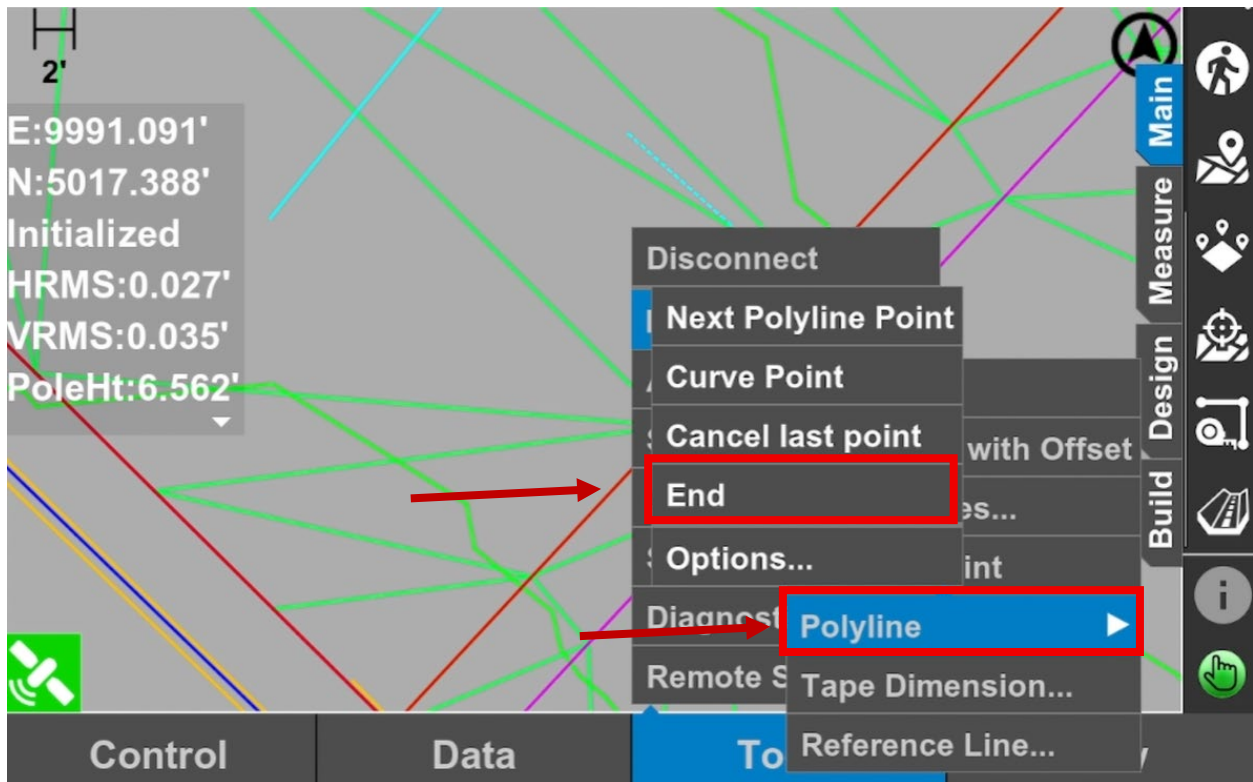


15. If you want to end measuring, just tap on "Tools" then "Measure Topo".

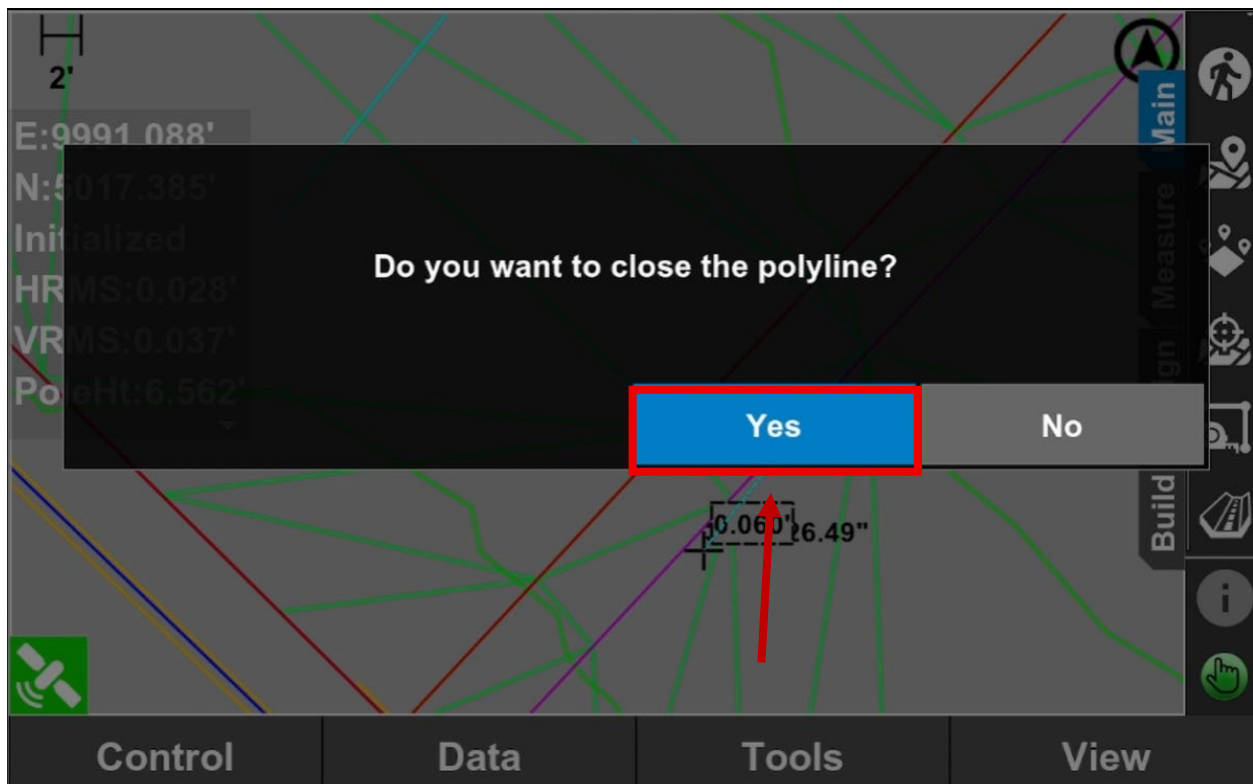




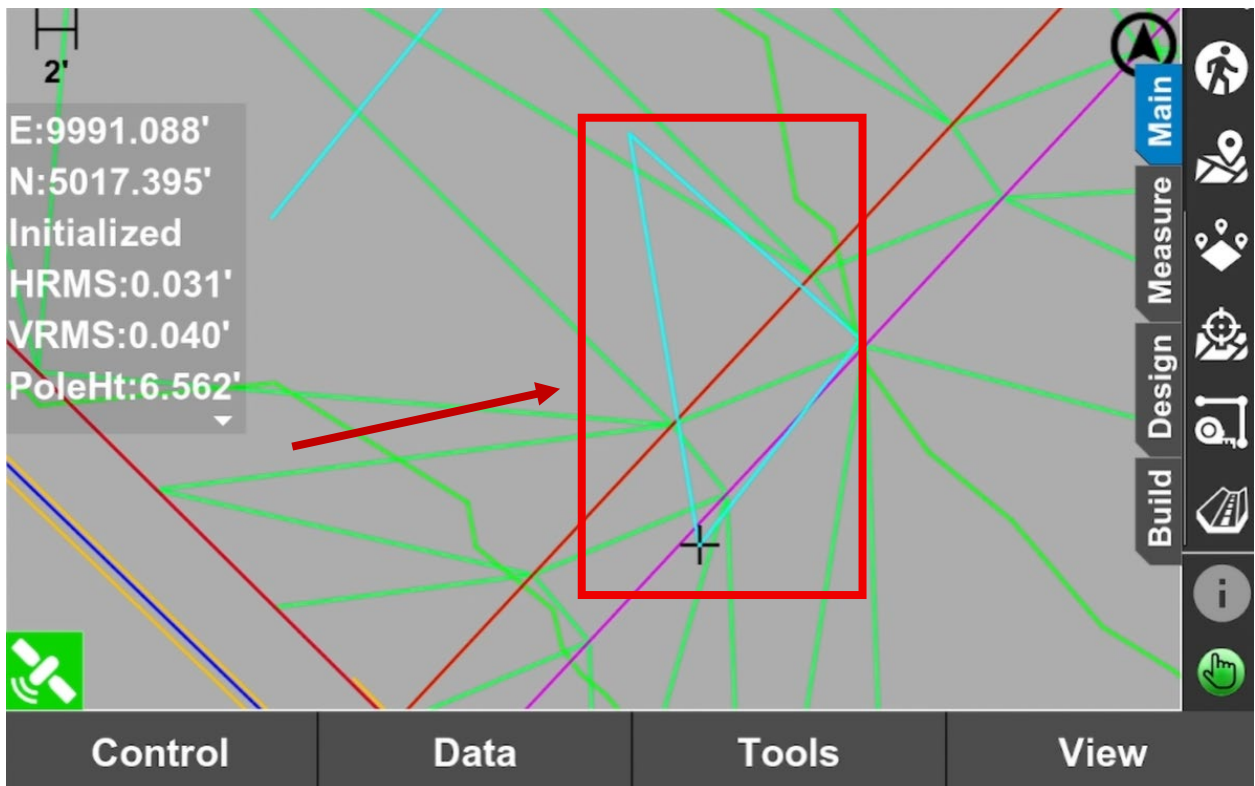
16. Click **"Polyline"** then click **"End"**.



17. Tap **"Yes"**



18. After hitting “Yes”, it will close and make a “Triangle”.



---

5900 NE 152nd Ave. Suite 120 Vancouver, WA 98682

Phone: (564) 274-0024 | Fax: (360) 635-4924 - Email: [Support@4kequipment.com](mailto:Support@4kequipment.com)